



GEOKOAX[®]
geothermal systems

Preparing and Installing the GEOKOAX GSHE

November 2017

Guidelines for the GEOKOAX GSHE

- ❖ Protect the GEOKOAX GSHEs against damages and UV exposure after delivery.
- ❖ Store the GEOKOAX GSHEs on a level surface.
- ❖ Protect the probe extensions, probe heads and probe bases against external contamination – ensure protective end caps remain in place during storage.
- ❖ The individual GEOKOAX GSHE parts are joined together by means of butt welding. For guidance please refer to national PE Pipe Butt Fusion guidelines. In Germany, butt welding may only be performed adhering to DVS Guidelines (DVS: German Welding Society), in specific DVS Standard 2208-1 and 2207-11 (2017) Edition - [Deutsches Institut für Normung EV. \(DIN\)](#)

Installation Tools

Use collets and roller sliders to secure and install the GEOKOAX GSHEs.



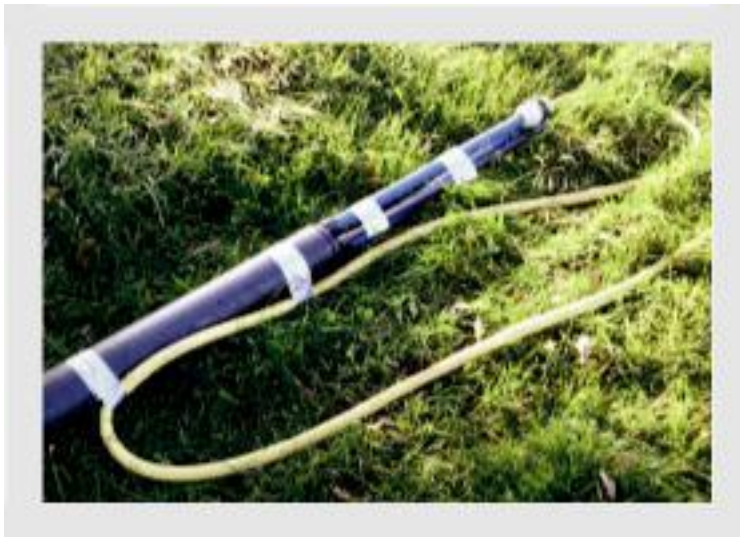
Individual Processing Accessories

Use welding tents on construction sites when necessary dependent on the circumstances and weather conditions. On rough surfaces, use cable laying rollers to smoothly move GEOKOAX GSHEs during welding.



Preparing and Installing the GEOKOAX GSHE

- ❖ Install the GEOKOAX GSHE in a 90 degree position to the bore hole and the mounts.
- ❖ Connect the water supply to the return line of the probe (a 50-to-40 fitting on the probe head) to fill the GEOKOAX GSHE.
- ❖ Fasten the three pipes with adhesive tape for stabilization.
- ❖ Fasten the water supply to the head of the GEOKOAX GSHE with adhesive tape. Do **not** fix the water pipe to the return line only, it might be torn off).

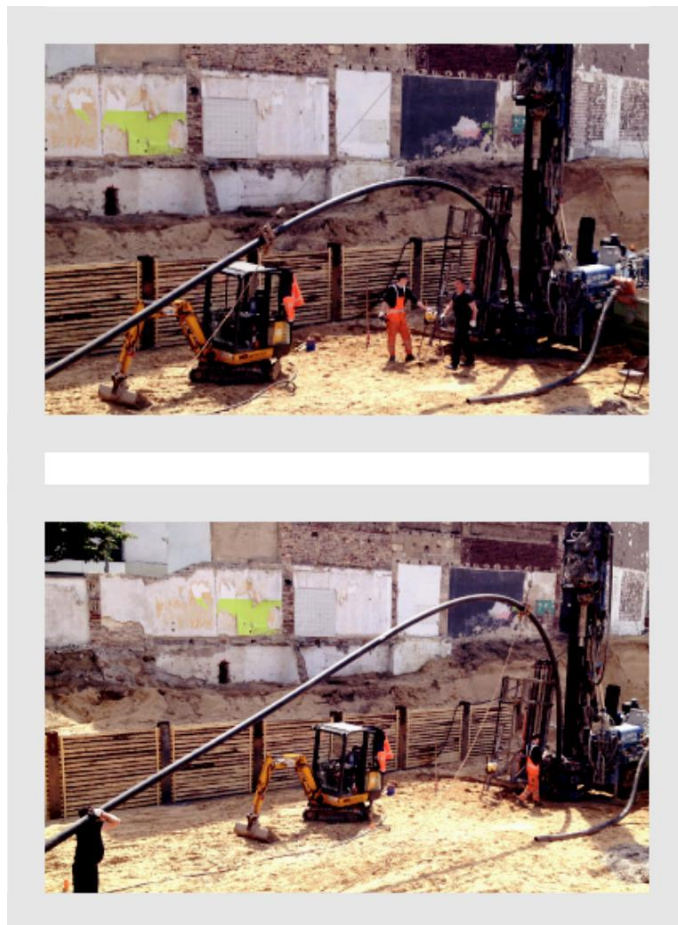


- ❖ Position the guide carriage at 7 to 8 meters from the probe base and fix it with the collet to prevent the carriage from slipping down.



Installing the GEOKOAX GSHE

- ❖ Lift the guide carriage with the mount's wire rope hoist to a position from where the GEOKOAX GSHE can be positioned in the bore hole.
- ❖ Push the GEOKOAX GSHE and slightly pull the guide carriage upwards so that a continuous arch is shaped.



- ❖ When the GEOKOAX GSHE has reached a floating position, start filling water into the return line and sink the GSHE smoothly into the borehole by regulating the water flow carefully.
- ❖ When filling the probe with water it will sink into the borehole due to its weight.
- ❖ The water within the GSHE must not rise above the peak to prevent the GEOKOAX GSHE from kinking.